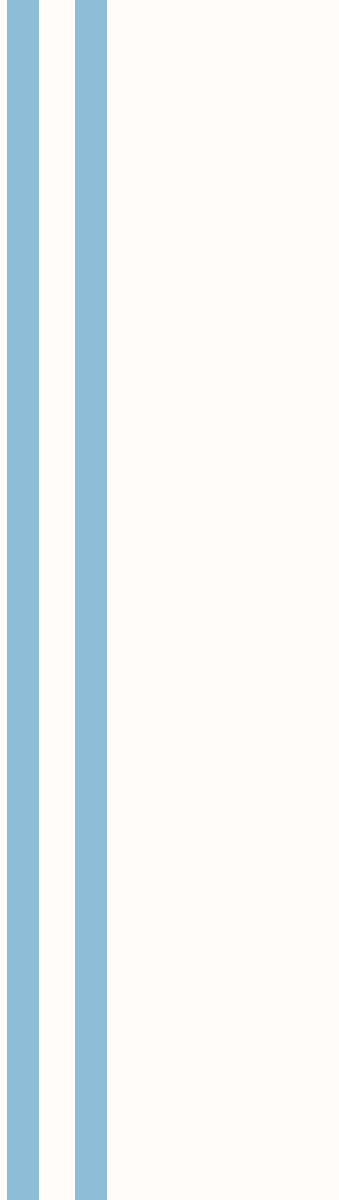
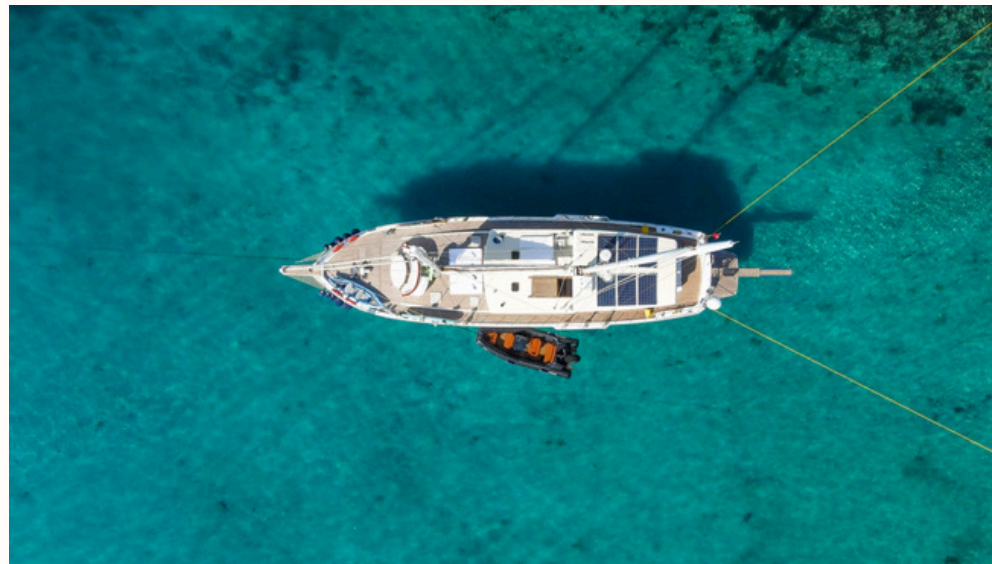
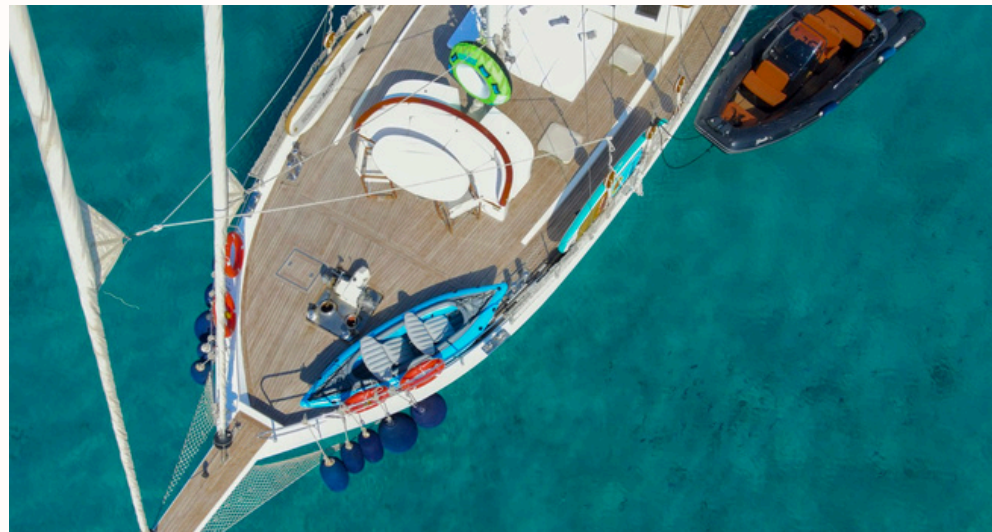




**GAZELLA**







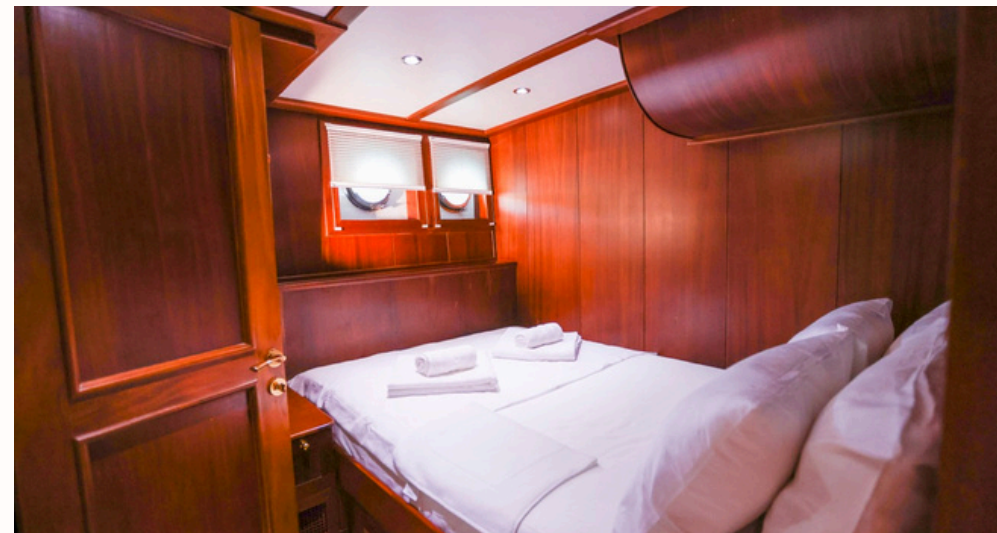












# SPECIFICATIONS

Built/Refit: 2006 / 2022

Crew:4

Length: 25m

Beam: 6.5m

## Engines & Generators:

Iveco 2 x 285 hp

2 x 24 kw Onan

Max speed: 11 knots

## Accommodation:

4 cabins for 8 guests (1 Master, 1

VIP, 2 Double)

## Entertainment:

6m Boat

2.5m Tender

2 x Paddle Board

Ringo

Water Kayak

Canoe

Drop-Down Platform

Wifi

TV & Music System in the saloon & all cabins

---

\*This document is not contractual. The yacht's specifications and description are displayed in good faith and whilst believed to be correct are not guaranteed. All yacht details are offered for informational purposes only. Any information about the yacht and its specifications is subject to change without notice.